

# 2023 IMPACT REPORT



THE POWER OF CONNECTIONS





# A MESSAGE FROM OUR CEO

Dear friends,

When I think of our journey at YSS, two words always come to mind: Hope and Opportunity. This year, more than ever, these words have been the lifelines we’ve extended and received in return, forging deeper connections that echo our mission – to create hope and opportunity by putting kids first.

Our vision paints a world where our youth are not only valued but are empowered to stand strong. I’m in awe as we’ve seen this come alive through the voices and experiences of our youth over the last year. YSS took several steps furthering our commitment to authentic youth engagement demonstrated through AMP’s youth driven legislative agenda, approving compensation for youth providing lived experience, integrated youth input into Ember Recovery Campus design, and hiring more YSS alumni in key direct care and leadership positions!

At the heart of this year’s accomplishments is the power of connections. With a goal to create (and count) 1 million intentional and substantive connections across health, self-sufficiency, education, and safety by our 50th anniversary in 2026, we are more committed than ever. These are not just connections between us and the youth we serve, but those that intertwine our more than 300 dedicated YSS’ers, many of whom, like myself, have personal ties to this life-changing mission impacting more than 10,000 individuals annually.



Beyond numbers, it’s the stories that matter. Stories of resilience, triumph, and transformation. Stories written through existing programs, and those envisioned through Ember Recovery Campus, soon to bring 70 nature-based, trauma-informed, experiential behavioral health beds to Iowa, marking the state’s largest investment in children’s behavioral health in a generation.

What excites me most is not just where we are, but where we’re headed. The upcoming ribbon-cutting at YSS of North Iowa, the expansion of therapy services in Des Moines, and the anticipation of Ember Recovery Campus are but a few examples. As you look through these pages, be proud. Each one of you plays a pivotal role in this journey. Your unwavering support, trust, and belief in our mission not only fuel our daily operations but elevate our aspirations.

Let’s move forward, together, continuing to place our kids first, and transforming their stories of despair into narratives of hope, strength, and infinite opportunity.

Andrew Allen  
President & CEO ('95 Alumnus)



# OUR CORE VALUES

- COMMITMENT
- COLLABORATION
- COMPASSION
- INNOVATION
- INTEGRITY
- ‘CAN-DO’ SPIRIT

# OUR MISSION

To create hope and opportunity by putting kids first.

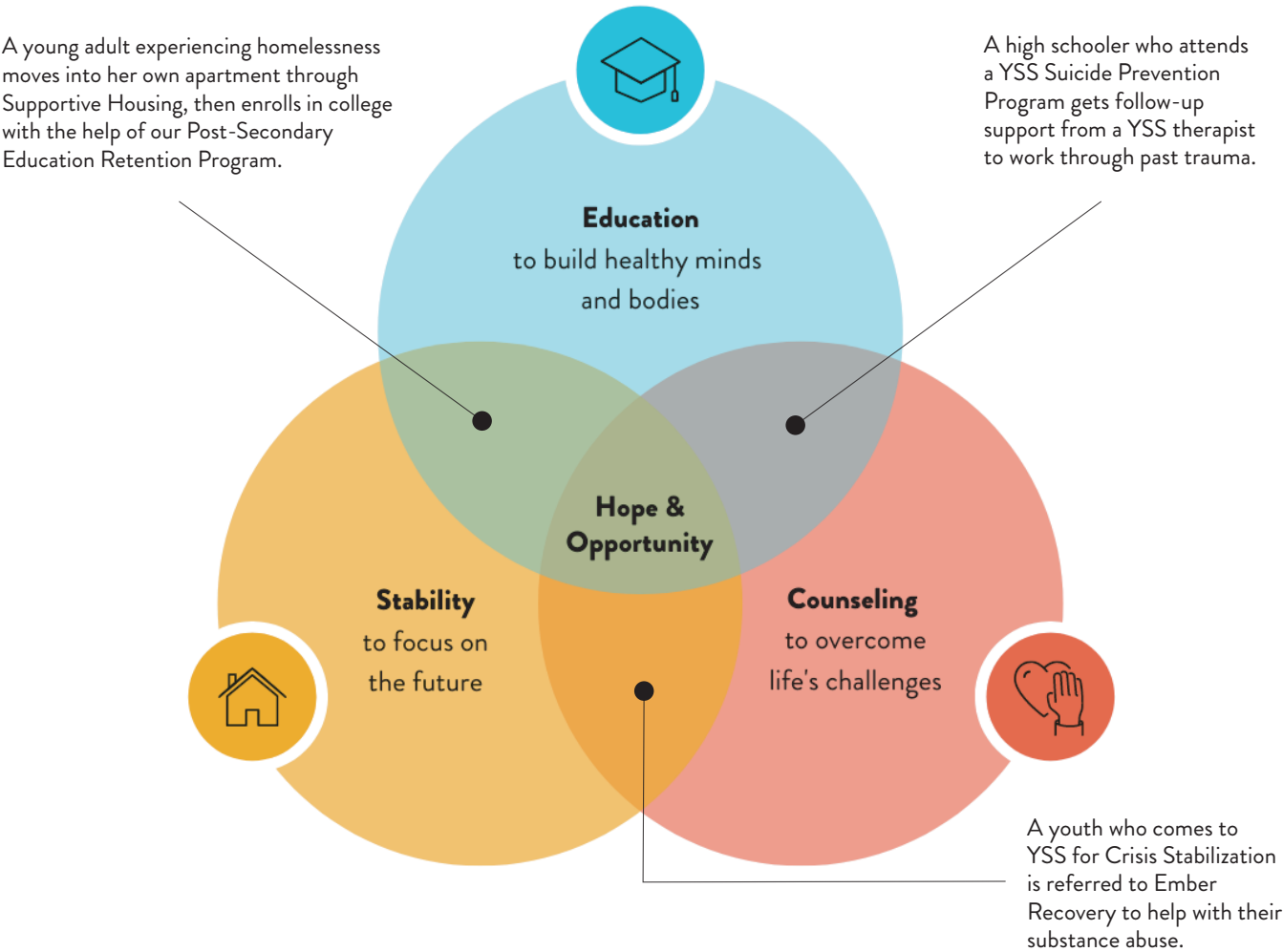
# OUR VISION

A world where youth are valued and empowered to stand strong.



# HOW WE CREATE CONNECTIONS

YSS empowers youth by providing education, counseling, and stability. We provide a continuum of care. Our programs give youth and families the tools they need to succeed throughout their lives.



# THE POWER OF CONNECTIONS

We create more than 200,000 connections each year to keep youth and families healthy, educate them on issues that impact them, give youth confidence to be self-sufficient, and most of all to make sure they feel safe.

91%

of youth and families reported an increase in overall health

88%

increased understanding of issues that impact them because of YSS education

94%

identified they have learned skills/been provided resources to attain self-sufficiency

92%

feel increased safety after being involved in YSS services

## AREAS OF FOCUS

### Afterschool Care

Offers before/after school and summer care for elementary kids

### Crisis Stabilization

Provides short-term care with 24-hour supervision for youth experiencing an acute behavioral health issue

### Emergency Shelter

Offers a safe place for youth in crisis, with food, clothing, hygiene items, and support

### Foster Care Advocacy

Empowers foster care youth and offers assistance for young adults who age out of the system

### Homeless Youth Services

Helps at-risk and homeless youth by providing drop-in services, daily meals, and street outreach

### Individual and Family Therapy

Provides counseling to clients of all ages using a variety of therapeutic approaches

### Mentoring

Builds positive relationships through school-based and community-based mentoring

### Pregnancy and Parenting Education

Offers parenting education and supplies for pregnant women and young mothers

### Post-Secondary Education Retention

Helps young adults meet education goals through case management, tutors, job assistance, and financial planning

### Prevention

Prepares kids to make good choices through school and community programming

### Residential Addiction Treatment

Provides an evidence-based recovery program for youth with substance use disorder in a safe, homelike atmosphere

### Supportive Housing

Offers individualized support and rental assistance for homeless young adults





## MAKING CONNECTIONS

### JACK TRICE STADIUM TOUR

Youth from Rosedale Shelter toured Jack Trice Stadium and learned about field maintenance from the turf and grounds team.

### SIXTH AVENUE FLATS

YSS announced the completion of our new counseling offices at Sixth Avenue Flats in Des Moines. The apartment building has been open for a year and offers affordable housing for youth who have aged out of foster care.

### YSS OF NORTH IOWA

YSS renamed its community-based center in Mason City to "YSS of North Iowa." Previously known as YSS Francis Lauer, the organization kicked off construction on the final phase of a \$4 million renovation.

### COMMUNITY LEADERS

YSS held its recognition luncheon, where we honored our community of donors, partners, staff, alumni, friends, and families who support YSS's mission and make a difference in the lives of youth across the state.

### VALUABLE TO THE CORE

YSS held its Core Value Awards to recognize staff that exemplify each of our core values and go above and beyond for our clients.

### NEW TEAMMATES

Iowa State athletes Jaylin Noel, Nyamer Diew, Tamin Lipsey, and Drake's Tucker DeVries joined the YSS Ambassadors program.



### AMP DAY ON THE HILL

Foster care youth presented their legislative agenda at the annual AMP Day on the Hill. Gov. Kim Reynolds spoke, and YSS youth and staff shared their lived experiences.

### THE SEASON OF GIVING

In December, generous donors purchased 2,168 gifts to fulfill 542 individual wish lists as part of the YSS Holiday Giving program.

### OPEN FOR BUSINESS

YSS opened our ninth Kid's Club location at Colo-Nesco Community School District, offering a safe, enriching space for children.

### LOOKING AHEAD

Nyssa and Patrick were named the 2023 recipients of the YSS Mary Ann and Jim Black Collegiate Recovery Scholarship.

### WASHINGTON DC FLY-IN

YSS was part of a sponsored delegation that participated in the Washington D.C. Fly-in to meet with elected officials.

### GAME ON!

YSS held its annual Kids Club Olympics. Events consisted of opening ceremonies, a running of the torch, water play, tug of war, chill zone, tattoo station, and closing ceremonies with awards.

### DREAM IT. BUILD IT.

Progress continues at the Ember Recovery Campus, where residential treatment, emergency shelter, and crisis stabilization programs are on track to open in 2024.

### POWER OF POSITIVITY

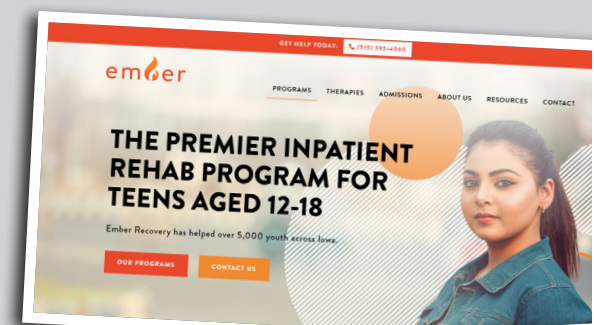
Nearly 1,000 seventh graders participated in the annual Teen Maze – an experiential event which covers key topics for teens and encourages positive decision-making.

### NONPROFIT LEADERS

YSS was one of three nonprofits picked for Gov. Kim Reynolds' inauguration and received proceeds from the Inaugural Committee.

YSS has re-branded its long-standing and highly successful residential addiction treatment program as "Ember Recovery." More than 5,000 youth have come through YSS's doors seeking help. Although the program, staff, and mission remain the same, the new brand will help the organization reach even more families and prepare for expanded services when the new Ember Recovery Campus is completed.

*"I felt like I could be myself more. It wasn't like an institution and that's what I really enjoyed about it."*



FIND US ONLINE: [EMBERRECOVERY.ORG](https://emberrecovery.org)

[f](https://www.facebook.com/emberrecovery) [X](https://www.x.com/emberrecovery) @EMBERRECOVERY



## NOAH'S STORY

**"It makes me feel good knowing I'm impacting someone else's life, just like my mentor did for me."**

When Noah was in second grade, he moved in with his grandparents while his mother struggled with substance use. Amidst the turmoil in his personal life, Noah found stability through the YSS Mentoring program.

His mentor, Macy, came to his classroom once a week to eat lunch with him, play games, and ask how he was doing.

Those interactions made all the difference for Noah and gave him something positive in his life when he needed it most.

"It was a life-changing experience," Noah says. "I was shy and didn't let many people in, but I looked forward to seeing Macy every week. It helped having someone to talk to."

Now a student at Boone High School, Noah went from being a YSS mentee to a YSS mentor.

At the beginning of his sophomore year, Noah's school sent an email about applying to the YSS Mentoring program—and he immediately jumped on the opportunity.

He wanted to become a positive role model to someone else—just as Macy was to him.

This year, he is mentoring a young student at the local elementary school. Noah explains that his mentee also lives with his grandparents, so Noah can relate on a deep level and offer personal advice.

"Every week on my lunch hour, I drive to the elementary school and we play games—Trouble is his favorite," Noah explains. "His teacher always says how he can't stop talking about me, and he can't wait until it's Thursday."

Teachers report that YSS mentees are better students and develop positive behavior in the classroom. A recent YSS survey found that 92% of youth reported their relationship with their mentor is important to them.

## EDUCATION

We believe early awareness gives youth the tools they need to stay on the right path — and prevent serious issues down the road. YSS educates kids and families to make healthy choices and prepare for the future.

**99%**

of YSS Kids Club youth maintained or increased their academic performance and positive social interactions

**272**

youth impacted by YSS Mentoring Programs

## COUNSELING

We provide counseling to help youth overcome obstacles and heal with compassion. From residential treatment for substance use disorder to family therapy — YSS is here to guide youth and help them live their best lives.

**91%**

of addiction treatment graduates gained the coping skills to stay sober

**1,788**

clients served in outpatient therapy

## CJ'S STORY

**"The first day that I got there it felt so different than any other place I'd ever been to."**

After the death of his father and grandmother at a young age, CJ began using. First, he was introduced to smoking. Next, he had his first drink as a sixth grader.

"I was so depressed. I was so ... lost," CJ says. "As soon as I drank for the first time I was addicted right after that. I drank all the time. I started getting into a lot of trouble at school."

Finally, he started experimenting with pills in eighth grade: "The thing I was most addicted to was opioids."

He finally hit rock bottom when he overdosed by accident.

"There were a lot of times I would use and pray that I wouldn't wake up because I was so messed up in the head and so addicted to the things I was doing," CJ says.

He went to a pair of rehab clinics. He relapsed after release from the first. Of the second he says: "I actually was using while I was in there."

He was kicked out. Then he relapsed again. Then he overdosed again.

Back to rehab. Only this time CJ entered YSS's Residential Addiction Treatment program, Ember Recovery, in Ames. Unlike his previous centers, the Ember Recovery treatment program created a home-like atmosphere. CJ had a bedroom, chores, and an opportunity to focus on his wellbeing. He began to see light where previously it was dark.

"I felt like I could be myself more," CJ remembers.

CJ graduated from Ember Recovery. Now 18, CJ has a 3-month-old baby boy with his girlfriend, Zoey. He works at the Hy-Vee warehouse in Cherokee. He has his own apartment. He was honored with a Youth Achievement Award at the YSS McCay Awards in July. And most importantly, he celebrated two years of sobriety this year.



**"Without YSS, I don't know if I would be on the streets because of my situation."**

**"It just felt very welcoming. Everyone was always there to support you."**



LAURA'S STORY

“Laura got the help she needed, wanted, and deserved. She is on her way to a successful life.”

When Laura\* began accessing drop-in services at Iowa Homeless Youth Centers (IHYC), a YSS organization based in Des Moines, she was living on the streets and struggling with substance use. Although the resources from IHYC helped her situation, Laura needed housing to find true stability.

With the help of YSS, Laura was able to move into her own apartment through the organization’s Supportive Housing program. Having her own place and receiving ongoing support from YSS staff was just the thing she needed to get her life on track.

When Laura moved in, YSS helped furnish her apartment and made sure she had food. The transition was understandably difficult; overnight, Laura went from survival mode to self-sufficiency. But she continued to reach out to staff for assistance.

During her first year living at her new apartment, Laura engaged with mental health services at IHYC, where she developed trust with her therapist and began her journey toward sobriety. She went through the paperwork to get an emotional support animal in her apartment, which taught her responsibility. After Laura obtained all her vital documents, she enrolled in college as a full-time student.

Today she is still sober, staying in constant contact with her sponsor, and forming positive connections to keep her motivated. Laura worked with her YSS advocate to be accepted into the mainstream voucher process so she can begin the steps to move into Section 8 housing. This will provide her with long-term rental assistance until she graduates and can earn a living wage.

All this was possible thanks to the security and stability of an apartment. When she obtained housing, Laura could finally focus on her goals.

\*name changed to protect identity

STABILITY

Youth need to feel safe and secure before they can truly focus on their future. YSS offers stability for our clients, providing a strong and constant support system throughout their entire journey.

2,656

visits between YSS Aftercare advocates and youth who aged out of foster care

5,040

overnight stays in emergency shelters



“No one gave up on me when I was giving up on myself.”

SENIOR LEADERSHIP



ANDREW ALLEN

President, CEO, and '95 Alumnus



BELINDA MEIS

Chief Operating Officer



MARK VANDERLINDEN

Chief Financial Officer



KARA WARME

Chief Development Officer



LISA HOFFMAN

Executive Assistant and Special Projects Coordinator

VOLUNTEER LEADERSHIP

CORPORATE BOARD OF DIRECTORS

- Nahla Atroon, Youth member
- Erin Baldwin
- Joseph Barrett, Treasurer
- Jim Black
- Mariah Bolton, Youth member
- Jeff Brinkley
- James Bucher, Chair
- Tim Day
- Meri Edel
- Laura Jolly, Vice chair
- Christy Krause
- David Lee, Youth member
- Lindsey Long, Secretary
- Stacey McDonald
- Randi Peters
- Mike Phillips
- Monica Porter
- Hilary Seo
- William Underwood
- Dr. Toyia Younger

FOUNDATION BOARD OF TRUSTEES

- Jim Baker
- Marcy Baker
- Dan Culhane
- Suzanna de Baca
- Deb Fennelly
- Keith Halleland
- Robert Knight, Chair

- Tamim Mahayni
- Kyle Mertz, Vice chair
- Drew Nelson
- Allison Ostendorf, Youth member
- Amy Pieper
- Dan Robeson
- Doug Robey
- Lyric Sellers, Youth member
- Jonathan Swanson, Secretary/Treasurer
- Susan Tucker
- Robert Waggoner
- Ross Wilburn
- Taylor Williams

COMMUNITY ADVISORY BOARDS

YSS OF BOONE COUNTY

- Mariah Bolton
- Sam Byriel
- Fran Duncan
- Sue Gradoville
- Lorraine Hamel
- Courtney Koster
- Marleen Moffitt
- Andrew Nelson
- Gloria Stearns
- Judy Tungesvik
- Jamie Wingfield

YSS OF HAMILTON COUNTY

- Kathy Birkestrand
- Ron Birkestrand
- Keith Halleland
- Elly Hassebrock
- Dan Hurt
- Connie Ingraham, Co-chair
- Kandy Martin
- Thomas McLaughlin
- Sonia Rodriguez, Co-chair
- Rick Young

YSS OF MARSHALL COUNTY

- Fred Lembke
- Meri Edel
- Michael Tupper
- Amy Pieper, Chair
- Pat Kremer
- Chris Vaughn
- Norma Meade
- Ken Fox
- Dianne Floyd
- Luisa Ortega
- Maranda Jurado

YSS OF NORTH IOWA

- Michael Davis
- Jeff Brinkley
- Heidi Venem
- Taylor Williams
- Shannon Wooge, Chair
- Pat Tomson
- Jamie Heard

IHYC

- Marcy Baker, Vice-chair
- Jessica Bastian
- Joseph Barrett, Chair
- Heather Carew
- Linda Cowger-Russell
- Laura Jontz
- Alison Kanne
- Nathan Lentz
- Magda Lippold
- Anupam Mittra
- Mary Oliver
- Amy Peters
- Abi Reiland
- Bridget Shapansky
- Sandra Suarez
- Terrence Thames
- Betty Torgerson
- Jeremy Weiss
- Patrick Willer
- Libby Zaletel

COMMITTEES

- Story County Juvenile Justice
- YSS Diversity, Equity, and Inclusion
- YSS Facilities and Risk Management
- YSS Finance and Audit
- YSS Foundation Finance and Investment
- YSS Friends and Holiday Giving
- YSS Personnel Practices
- YSS Prevention Policy
- YSS Public Policy



# DONOR SPOTLIGHT

## FOSTERING HOPE

Jan Beran keeps a small, weathered birthday book. Printed perfectly on the pages are the names of the 40-plus kids Jan and her husband, George, welcomed into their home as a foster family for YSS. The first — a boy — was in 1981.

“He stayed a little over two weeks,” Jan points out, looking at the entry.

For more than 20 years the Berans fostered boys and girls in their home. The last — a mother and her baby — stayed in February 2002.

“For some of the kids that was the first time they sat down for a meal,” Jan recalls.

It’s been more than two decades since being a foster family. But the contributions to YSS haven’t stopped. Jan has served on multiple boards, and in the latest chapter her family donated \$500,000 to Ember Recovery Campus.

“They are doing such important work, we thought we could share,” Jan says. “We wanted to be a part of it.”

Important work is something Jan and her husband — who resides in memory care — know a lot about. For 13 years they were missionaries in the Philippines. Jan has been a youth group leader, Sunday School teacher, and has held many leadership positions in professional organizations. The Berans have touched countless lives. One boy, who lived with the Berans for eight months, was so inspired he, too, became a foster parent.

“He and his wife and children stopped at our house,” Jan remembers. “And we learned that two of the three children with them they had adopted because their mother was in prison.”

The Berans’ impact on youth is immeasurable — from providing a healthy, safe environment for youth to their donations to Ember Recovery Campus — they have put kids first for over 40 years.



“  
For some of the  
kids that was the  
first time they sat  
down for a meal.  
”



### INSPIRING THE NEXT GENERATION

We started a family charitable giving account, and we all contribute to it. Each year we talk about who and how we want to help. Watching the joy it brings them to know they are making a difference for others makes it even more special.

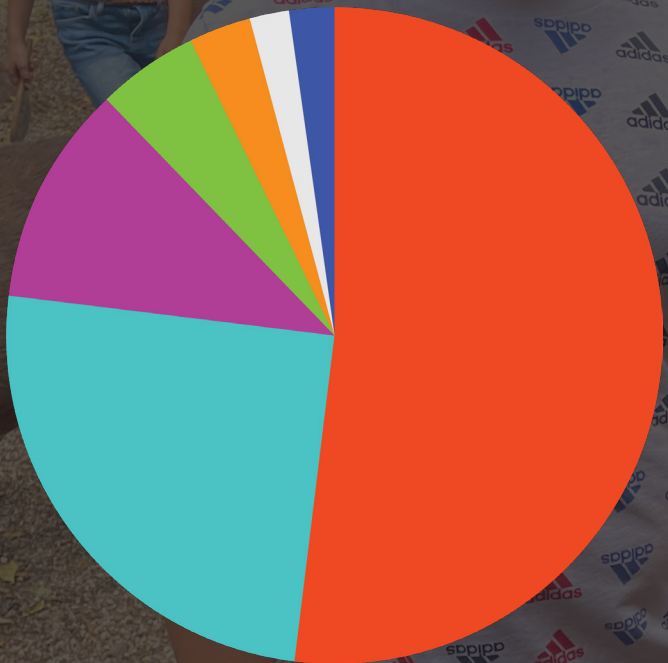
— Erin Wendt on why she and her husband, Noah, support YSS programs and are teaching the importance of philanthropy to their two daughters

# FINANCIAL STATEMENT

## ANNUAL FUNDRAISING: \$2,054,090

Thanks to our generous community of donors, partners, and volunteers, YSS is able to offer hope and opportunity to those who need it most. With your help, we can continue investing in facilities, people, and programs that fill gaps in our communities. Together, we’re making a difference and building a brighter future.

### REVENUE



- Government Grants: 52%
- Fee-for-Service: 25%
- Donations: 11%
- Local Support: 5%
- Private Grants: 3%
- United Way: 2%
- Other: 2%

### EXPENSES



- Supportive Housing: 45%
- Counseling & Treatment: 32%
- Shelter & Crisis Services: 10%
- Prevention & Education: 13%

## SPECIAL RECOGNITION

Variety –  
The Children’s Charity  
\$1,000,000

Sharon and Jeff Becker  
\$500,000

Underwood  
Family Foundation  
\$275,000

Valerie and Murray Wise  
\$100,000

Community Foundation  
of Greater Des Moines  
\$100,000

Erica and Matthew Campbell  
\$70,000



# 2023 IMPACT CIRCLES

Based on combined giving from July 1, 2022-June 30, 2023. Corrections, contact Sarina Flathers: sflathers@yiss.org

## CHAMPION: \$25,000+

Archer Daniels Midland Co.  
Sharon and Jeff Becker  
Jan and George Beran  
Adele and Dean Bowden  
Margaret Brennan Estate Gift  
Erica and Matthew Campbell  
Carlson Family Foundation  
City of Des Moines  
Community Foundation Great River Bend  
Community Foundation of Greater Des Moines  
Cornerstone Church of Ames  
Farrer Endowment Foundation  
Donna and Bob Furleigh  
Kinney-Lindstrom Foundation, Inc.  
Linda and Tom Koehn  
Lohse Family Foundation Fund

Wanda and Doug McCay  
Maxine Packard Estate Gift  
National Philanthropic Trust  
Nationwide  
Polk County Board of Supervisors  
Emily and Jon Sargent  
Susan and Philip Sargent  
S.L. Moore Charity Foundation  
Vicki and Steve Sukup  
Sukup Family Foundation  
Mary Jill and Joseph D Thoreson  
Pat and O Jay Tomson  
Underwood Family Foundation  
Variety - The Children's Charity  
Valerie and Murray Wise  
Kathleen and Larry Zimpleman

## EMPOWER: \$9,999-\$5,000

Availa Foundation  
Jodi Baldner  
Boone County Community Foundation  
Sue and Gary Clem  
Rowena Crosbie  
Lynell M. Dougherty  
Des Moines Area Association of Realtors Foundation  
Deb and William Fennelly  
Allison and Jim Fleming  
Clare and James Frevert  
Jennifer and Irving Hahn  
Emma and Doug Houghton  
IMT Insurance Company  
Judith and Richard Jacavino  
Sangita and Vishram Jalukar  
Lowrey Charitable Foundation

Marshalltown Area United Way  
McFarland Clinic Business Office  
Mosaic Church Marshalltown  
David and Phyllis Murphy  
Charitable Foundation  
Peterson Charity Foundation  
Kelly Scholl  
Steven Simmons  
June Smith  
Julie and Andrew Steines  
Lindsay Sturm  
United Way of Story County  
President Wendy Wintersteen  
and Robert Waggoner  
Shirley Wood  
Shannon and Courtney Wooge

## TRANSFORM: \$24,999-\$10,000

Nancy and Blake Averill  
Karen and James Baker  
Pat and Louis Banitt  
Heidi and Joseph Barrett  
Mary Ann and Jim Black  
Lori and Jay Brown  
Kelly and James Bucher  
Sarah and Ben Buck  
JoAnn and Curtis Clark  
John K. & Luise V. Hanson Foundation  
Community State Bank

Community Foundation of Marshall County  
First Citizens National Bank Charitable Foundation  
Richard K. Flaugh  
Honoring Neighbors Foundation  
Dean Hunziker  
Jill and Todd Klindt  
Midland National Life Insurance Company  
Mulready Koehn Foundation  
Leonard Good Trust  
Henry G. and Norma A. Peterson Trust  
Prairie Meadows  
Dr. Cosette and Dr. Louis Scallon  
Evelyn and Richard Shibbles  
The TJX Foundation Inc  
US Bank  
Wells Fargo Foundation  
Erin and Noah Wendt

## INSPIRE: \$4,999-\$2,500

100 Women Who Care Marshalltown  
Jackie and Clifford Abbott  
Amy and Dustin Abels  
Hollie and Andrew Allen  
Ann C. Keyser Charitable Trust  
Assistance League of Marshalltown  
Benevolent & Protective Order of Elks  
Bertha Stebens Charitable Foundation  
Laura and Eric Boatwright  
Bolton and Menk  
Charles City Community Fund  
Cerro Gordo County Community Foundation  
Danfoss Distribution Center  
Des Moines Scheels  
Elizabeth Muse Norris Charitable Fund  
Paula and Mark Garth  
Jessica and Nick Gerhart  
Graphite Construction Group

Ruth Ann Harris  
Lisa and John Hoffman  
Martha James  
Gene Johnson  
Kum & Go  
Patsy and Dr. Dennis Kollbaum  
Beth and Craig Marrs  
Laurie Ochs  
Judith Reel  
Ardeth and Paul Rietz  
Schiller Family Foundation  
Kenneth W. Schneider  
Hilary Seo  
Deepa Singhal  
St. Francis of Assisi Parish of Marshalltown  
Karen Wagner  
William Morrison Trust  
Woodruff Construction, Inc.



## ADDITIONAL YSS SUPPORTERS

### A

Abarrotes La Salud, INC.  
Abate of Iowa Inc  
District No 4  
Courtney Abernathy  
Acacia Fraternity  
Ace American Insurance  
Company  
Active Family  
Chiropractic  
Cathy and Dan Adams  
David Adams  
Judy Adams  
Janet and Ron Adams  
Addam C. Medina  
Foundation  
Claud Addicott  
Matthew Akey  
Judy Albritton  
Dennis and Pat Aldrich  
Dr Jill and Jacob  
Alexander  
Sara Allen  
Sandra and Edward Allen  
Ryan Allen  
Alliant Energy Foundation  
Anne Almquist  
Alpha Delta Kappa Iowa  
Pi Chapter  
Kent Altena  
Altrusa International  
of Ames  
John and Elizabeth  
Alverson  
Janet Alvstad  
AmazonSmile  
American Center  
For Philanthropy  
American Dream  
Machines LLC  
American Online Giving  
Foundation, Inc.  
Amerigroup Corporation  
Ameriprise Certificate  
Company  
Ames Friends Meeting  
Ames Golden K Kiwanis  
Foundation  
Ames Korean Christian  
Reformed Church  
Ames Performance  
Physical Therapy  
Tonya Amos  
Darcy and Michael  
Andersen  
Ronee Andersen  
Mary and Ric Anderson  
Gordon and Johanna  
Anderson  
Norma and Lester  
Anderson



Sue Anderson  
William Anderson  
James Anderson  
Mary Anderson  
Allison and Jerry  
Anderson  
Allison Anderson  
Christine M Anderson  
Kristie Anderson  
Elizabeth and Robert  
Angelici  
Ankeny Presbyterian  
Church  
Melissa Appelt  
Janet Arcand  
Kevin Archambeault  
Kelli Ardd  
Justin Armatiss  
Susan Armstrong  
David Arndt  
Rilla Arnold  
Ryan Arnold  
Sheryl and Everett Asmus  
Stephen Atkinson  
Augustana Women of the  
ELCA

### B

Sandy B  
Kim Babberl  
Dustin Baggenstoss

Trish and Kevin  
Bahrenfuss  
George and Mary  
Baitinger  
Iltas Bajramoski  
Marcy L. Baker and  
Nathan Johnston  
Jodi and Joseph Baker and  
Megan  
Betty Baker  
Randy Baker  
Sarah and Austin Bancroft  
Donna Banker  
Allison Bannister  
Heather Barber  
Derrick Barker  
Jared Barnes  
Carrie Barr  
Heidi Lepper Barrett  
Tamara Barrett  
Robert Barron  
Lisa Banitt and William  
Barry  
Christine Barry  
Jeff Barry  
Kim Barsness  
Edwin W Bartine II  
Benjamin Bartlow  
Elizabeth and Thomas  
Barton  
Richard Bartosh  
Jenny and Fritz Bassett  
Joshua Bates

Maral Batsaikhan  
Sarah Bauer  
Mary Beachler  
Anita Beachy  
Rebecca Beachy Miller  
Rachelle Beals  
Lynisa Beam  
Joel Beane  
Amy A. Beattie  
James Beckwith  
Joan and Raymond Beebe  
Matthew Beebe  
Florence Beek  
Katherine Beenken  
Cindy Beenken  
Laura and Jim Begg  
Justin Behr  
Barb Behrends  
Michael Belfoure  
Jill Belgarde  
Dr George P. Belitsos and  
Dr Peter Q. Wolfe,  
MD  
Marlene Bell  
Gino Beltran  
Sandra and Larry Benda  
Noelle Bennett  
Allan Bennett  
Doris Bennett  
Sandy and Raymond  
Benter  
Bergen Women of ELCA  
Kay Berger

Jason Berger  
Maureen Berger  
David and Shelly  
Bergeson  
Marianne E Berhow  
Kathy Bermel  
Theresa and Renald  
Bernard  
Myrna Bernemann  
Chris and Todd Berryhill  
Laurel Best  
Bethesda Lutheran  
Church  
Robert Bibens  
Nick Bierstedt  
Big Wigs Bar  
Jean Biggins  
Libby and Keith Bilyeu  
Barbara and Ian Binnie  
Patricia Trom-Bird and  
Michael R Bird  
Julia and Thomas Birdsall  
Brad Biren  
Kathy and Ron  
Birkestrand  
Diane and Ken Birt  
Julie Bisher  
Bitter & Twisted LLC  
Kathryn Black  
Black Magic Tattoo  
Jenny Blackford  
Blackhawk Sprinklers  
Candace Blackstock  
Deborah and Mark  
Blaedel  
Barbara Blake  
Cindy and James Bland  
Judy Blank  
Richard Blanshan  
Lynn and Joel Bleeker  
Scott Blessman  
John Bliden  
Dirk Bliss  
Jean and Ronald Bloxham  
Brent Blum  
Margo and Don  
Blumenthal  
Elmer Blythe  
Shawn Boardwine  
Bob Brown Chevrolet  
Marilyn Bode  
Michelle Bodenstener  
Boehringer Ingelheim  
Dorothy and John Bohan  
Simon Bohan  
Anne Bomstad Miller  
Karen Book  
Lisa A Fung and Kevin S  
Boots  
Dianne and Dr. Fred  
Borgen  
Tsinia Borgman

David Boseman  
Ms. Johanna Bowden  
J. Carol Bowers  
Patty and Jim Bowman  
Steve Boyles  
Matthew Braccio  
Isaac Bracher  
Mary and David Bradley  
Matt Bral  
Bral Niedert Private  
Wealth Advisors LLC  
Vivian Brandmeyer  
Darla Brandsfield  
Carol and James Brannon  
Chris and Terry Branstad  
Christine and Terry  
Branstad  
Linda and Jerry Bravard  
Marjorie Brcka  
Bobbretta Brewton  
Kari Bricker  
Mitchell Bridie  
Lynne Briester  
Amanda Briggs  
Janet and Rick Brimeyer  
Annie Brincks  
Brenda Brink  
Lisa and Jeff Brinkley  
Taylor Brockmeyer  
Ashley Broderson  
Dana Brown  
Dr Gayle Brown and  
Jonathon Tyler Holck  
Barbara Brown  
Rich Brown  
Gregory Brown  
Heather Brown  
Richard Brown  
Ada Brown  
Carolyn Brown  
George Brown  
Maria Brownell  
Mike Browning  
Emily Brownong  
Bruin Manufacturing  
David Brumbach  
Julie Brunsberg  
Carrie Brunsberg  
Brittany and Jacob  
Brunscheon  
Julie and Brian Buckallew  
Lindsay Bulinski  
Nic Bulver  
Sheryl Burch  
Aaron Burn  
Beverly Burns  
Patty Burns  
Sandra Burns  
Mary McGlynn Burns  
Larry Burton  
Sandy and Joe Burvee  
Thomas Busse  
Judith Butler  
Wanda Button  
Erica Button  
Terry Buzbee

### C

Don C  
CAF America C/O  
CyberGrants  
Linda Cahalan  
Susan Cahill  
Jim Cain  
Jared Caldwell  
Jacob Calger  
Chad Caligiuri  
Cambridge Investment  
Research  
Anne and Michael Campbell  
Ann Campbell  
Campbell's Nutrition  
Lindsay Cannaday  
John Cardani-Trollinger  
Heather Carew  
Richard Carlson  
Nancy and Ken Carlson  
Cathy and David Carlyle  
Kim Carmichael  
Steven Carnes  
Micheal Carney  
Susanne and Mike Carney  
Todd Carnley  
Thomas Carpenter  
Lexys Carr  
Shanda Carreon  
Janelle and Joseph Carter  
Carmela Brown and  
Michael Carver  
Diana and Ronald Carzoli  
Jason Casale  
Julie and Brian Cassaidy  
Rebecca Cassel  
Dirk Cavanaugh  
Chris Cecak  
Centene Corporation  
Foundation  
Central Iowa Community  
Services (CICS)  
Austin Chadderdon  
John Chai  
LeeAnn Chalupa  
Sandy and Patrick  
Chambers  
Josianne Chambers  
Ira Chandler  
Chapter N P PEO  
Charity Navigator c/o  
Give Lively  
Mary Charlson  
Adriane Charlton  
Sally and Roger Chase  
Leota Chase  
Chase Online  
Judy and Earl Check  
Chevron Renewable  
Energy Group  
Ben Chiochon  
Adel Chiropractic  
Paula Chizek  
Brandon Choos

Christ Community  
Church  
Krista Christensen  
Elizabeth Christensen  
Loa Christensen  
Ann Christiansen  
Annalise Christiansen  
Jen Christy  
Thonia Chua  
Abdul Chughtai  
City of Blairsburg Mayor  
and City Council  
City of Boone  
City of Collins  
City of Duncombe  
City of Haverhill  
City of LeGrand  
City of Liscomb  
City of Ogden  
City of Williams  
Charles Clabaugh  
Mark Clark  
Wayne Clayton  
Krysti Clayton Mostert  
Clear Lake Bank & Trust -  
Clear Lake  
Clear Lake Telephone  
Company (CL Tel)  
Melanie and Christian  
Clem  
Beth Clemente  
Nancy Clifford  
Toyin Clottey  
CoBank  
Jenny Cohan  
Tami and John Colby  
Curtis Coleman  
Richard Coleman  
Angela Collins  
Colo Sherman New  
Albany United  
Charities  
Knights of Columbus  
Commonwealth  
Charitable Fund  
Community Choice  
Credit Union  
Community Foundation  
of Greater Dubuque  
Community State Bank  
Caroline and Michael  
Compiano  
Laliza Condon  
Jennifer Connor  
Colleen and Corey  
Conrad  
Conrad Ventures, LLC  
Koester Construction  
Jonathan Cook  
Melissa and Rodney Copple  
Judith Corcoran  
Mary Beth Oostenbrug  
and Larry Cormicle  
Lori Cornick-Angell  
Ellen Corwin

Nancy and Bill Couser  
Mary and Mike Cowan  
Betty and Don Cox  
Elizabeth and Donald Cox  
Angela Cox-Weston  
Janice Coy  
Janice R. Coy  
Susan and John Cramer  
Patricia and Jay Cramer  
Hope Cramm  
Glenna and Ray Crannell  
Jill Craven  
Rebecca Crone  
Karna Cronn  
Jon and Kelley Crosbie  
Betty and Tim Cross  
April Crull  
Joel Cryer  
Mary Cullinan  
Kerwin Cumberbatch  
Lori Cummings  
Raymond Cummins  
Kevin Curley  
Mary K Curley  
Paula Curran  
Margaret Cutlip  
Nancy and Peter Cyr

### D

Abdurauf Dadabaev  
Brandi Dahl  
Tj Daigneault  
Jana Daisy  
Amber and Cole  
Danielson  
Amber Danielson  
Matt Darbyshire  
Kristi and Matthew Darr  
Teresa and Craig  
Davenport  
Teresa Davenport  
Jessica Davenport  
Connie Davids  
Jay Davis  
Wes Davis  
A. Carlene Davis  
Dianne Davis  
Sandra and Davis  
Maria Davis Hochstedler  
Nicki Dawkins  
Sarah and Tim Day  
Shirley Dean  
Dean Snyder Construction  
Stan DeBruin  
Barrett deCathelineau  
Deepti Deepti  
Genelle Deist  
Lynn Deiter  
Ronald E Deiter  
Jackie and Matthew  
DeLay  
Jackie DeLay  
Delta Sigma Phi-Beta  
Alpha

Matthew Deneen  
Lisa Denin  
Alison DePenning  
Perry DePhillips  
Ronald DeReus  
Dermatology, PC  
Tiffany Joy DeRocher  
Lisa Determan  
Angie Dethlefs-Trettin  
Abraham Dickerson  
Joel Dicks  
Gary Dickey  
Mary and Lowell Diersen  
Judith Dietrich  
Alan Dietzenbach  
N Jean Digmman  
Robert J Digmman  
Yvonne Diller  
Trudy and Kermit Dirks  
Linda and Steve Disbrowe  
Robert Dittmer  
Janet and Philip Dixon  
Thang Do  
Linda Doering  
Karen Dole  
Sue and William Dolezal  
Marlaire and Paul  
Domoto  
David and Lynne  
Doncarlos  
Stephanie Donnelly  
Amy and Chad Doobay  
Dylan Dordick  
Brennan Dostal  
Cary and Jerry Douglas  
Anita and Shawn Douglas  
Amy Doyle  
Mark Drake  
Dianne and Donald  
Draper  
Alice Draper  
Dee Dreeszen  
Adrienne Drescher  
Frank Henry Drey  
Haley Dubberke  
Bradley Duckstein  
Felicia and Joe Duffy  
Margaret and Jerome  
Dunbar  
Judith A. Dunker  
David Dyrud

### E

Ebenezer Lutheran Church  
Lee E Ebersole  
Sherri Eddy  
Erik Edens  
Virginia and Gerald Edgar  
Jane and William Edwards  
Debera and William  
Edwards  
Amie Edwards  
Janet and Keith Edwards  
Jeanne and David Edwards  
Pam and Paul Edwards



Saidamir Egamberdiev  
Kevin Eggers  
Phyllis and Wayne Eggers  
Marlene and Bruce Ehresman  
Pat Eitel  
Allison Elder  
Aaron Eldridge  
Electric Supply of Marshalltown  
Elim Lutheran Church  
Brenda and Jim Ellefson  
Carolyn and Phillip Ellingson  
Debra and Roger Elliott  
Terry Lee Elliott-Carman  
Janet Elwer  
Karla Embleton  
Emerson  
Jesse and Abbie Emhoff  
Sandy and Jerry Engdahl  
Renae Epp  
Margaret Epplin and Ron Mowers  
Marlene and Robert M Erickson  
Gina and Mark Erickson  
Barb and Daryl Erickson  
Gloria and Dennis Erickson  
Gloria Erickson  
Jessica Ernst  
Richard Ertz  
Helen and Dave Espersen  
Matt and Crystal Estabrook  
Allison Etcetera  
Dorothy and Gene Evans  
Jennifer Evans  
Kathy Evert  
Eyecare Associates  
Judi and Gary Eyles  
Judi Eyles

## F

Patricia Faber  
Alyce Fanslow  
Daniel Farlow  
Dan Farlow  
Roger and Anita Farmer  
Farmers State Bank  
Farrell's Extreme Body Shaping  
FCIS Insurance  
Roman Fedorov  
Sharon and Thomas Fenton  
Adriana Feo  
Karen Ferrie  
Colene Ferrin  
Kathy and Jim Ferris  
Sarah Fetter  
Fidelity Brokerage Services LLC  
Kathryn Fink

Carolyn Finnestad  
First Christian Church Ames  
First National Bank Ames  
First Point Financial  
Management and Trust Services  
First Presbyterian Church Marshalltown  
Mary Fischer  
Linda Fischer  
Deena and Kyle Fischer  
Jane Fischer & Associates LLC  
Martin Fisher  
Phyllis Fistler  
Maja Fitowska  
Bill Fitzgerald  
Sarina Flathers  
Scott Fleck  
Virginia Fletchall  
Jo and Loran Fletchall  
Dianne Floyd  
Teresa Flynn  
Timothy Flynn  
Rita Foley and Sheila Seitz  
Steven Ford  
Grant Ford  
Veterans of Foreign Wars  
Jim Foreman  
Emily Forrester  
Wendy Forrester  
Fort Dodge Correctional Facility  
FPA6 University West, LLC  
Mary Frahm  
Brenda and John Francis  
Glynn and Dagmar Frank  
Paul Freeman  
Joyce and Gary French  
Audrey Frett  
Christopher Frew  
Margaret Frey  
Paula and James Friederich  
Kelly Friesleben  
Miriam Fritz  
J. Keith Fry  
Cassie Fuerstenberg  
Greg Fuhrmann  
Marcia and Brian Fuller  
Monica Rohde-Fulton and Gary Fulton  
Peggy Fulton  
Funds2Orgs, LLC  
Michaela Funkhouser

## G

G. Wandling & Associates, Inc.  
Clark Gaff  
Carolyn and Ed Gagnier

Jaideep Gajerawala  
John Galici  
Galilean Lutheran Church  
Terry Gallagher  
Robert Gantz  
Teryssa Garcia  
Donna Gardner  
Elizabeth and Thomas Gardner  
Jesse Garman  
Andrea Garnant  
Tim Garner  
Evelyn Garrison  
Jean Gauger and Hiram Rogers  
Margaret and Tim Gaul  
Letitia and John Geanon  
Nancy and Keith Geiken  
Geisinger Construction  
Bonnie and Bob Gelina  
Jeannette and Paul Gengler  
Chris Genther  
Dawn and Drew Gentsch  
James George  
Daniel Gervich  
William Gibson  
Mary and David Giese  
Mary Giese  
Katie Gieseke  
Joanne Marshall and Stephen Gilbert  
Gilbert Lutheran Church  
Donna Gilligan  
John Gist  
Give Lively Foundation  
Mary Jo and Tom Glanville  
Globe Gazette  
GNB Bank  
Cathy Godwin  
Golden K Kiwanis  
Nancy Hibbs-Good and Don Good  
Jamie Goodwin  
Patrick Goodwin  
Karen and John Gookin  
Marsha and Paul Gordon  
Emily Gould  
Christopher Gourley  
Georgianna and Gary Gourley  
Linda and Wendell J Graber  
Marcia and Doug Grabinski  
Grace United Methodist Women  
Joyce and Ray Gragg  
Geraldine Grant-Hansen  
Gerald Gravo  
Doug Grawe  
Janet P and Henry W Gray  
Terry and David Gray  
Kent Graybeal

Greater Iowa Credit Union  
Allison and Thomas Greenwald  
Chuck Greenwood  
Myra and John Greve  
Sally and John Greve  
Joanne Griep-Adams  
Troy Groeneweg  
Beth Grosc  
Alan Gross  
Nancy Grudens-Schuck  
Melba and Karl Gschneidner  
Lindsey Guerrero  
Jill and Michael Guffy  
Jill and Michael Guffy Fund  
Julian Gunney  
Christine Gustafson  
Margaret Dempsey and William J Gutowski Jr  
Nancy and William Guyer  
Barbara and Karl Gwiasda

## H

Oxana H.  
Susan and Alan L Haberl  
Joan and Al Haberman  
Janice Hackbart  
Kim Hagemann  
Lynn and Howard Hagen  
Glen Hager  
Julie and Michael Haggerty  
Julie Haggerty  
Mary and John Haila  
Robert Haines  
Tony Hale  
Aaron Hale  
Kayla and Doug Halfpap  
Julie and Cary Halfpop  
Betty Halleland  
Pamela and Ronald Hallenbeck  
Sandra and Bruce Halverson  
Lorraine and Ronald Hamel  
Amber Hamersley  
Pat Hand  
Patricia Hand  
Joyce Hanes  
Natasha Hanisch  
Kristin Hanks-Bents  
Rebecca and Patrick Hanlon  
Barb and Mark Hanna  
Richard Hannasch  
Don and Dawn Hansen  
Jen and Shanda Hansen  
Rachel Hansen  
Jen Hansen  
Scott and Bria Hansen  
Marie Hansen

Geraldine Grant-Hansen and Edward C Hansen  
Marilyn and Steven Hansen  
James Harbour  
Cahyaningtyas Hardini  
James and Katleen Harlan  
Jerry Harlow  
Trish Harlow  
Dawn Harms  
Jay Harrell



John Harrelson  
Mary and Jeffrey Harris  
LG Harris  
Lorene and Rudolph Harris  
Linda Harris  
Patricia B Harrison  
Nancy and Woody Hart  
Ella and Floyd Harthun  
Kristen Hartman  
Robert Hartz  
Deb Harvey  
Becca Hasbrouck  
Amanda Hassid  
Sonja Roberts and Jack Hatch

Anne Kimber and Bob Haug  
Debra Haugen  
Cindy and Jon Havinga  
Shari Hawk  
Amy and Gregory Hawthorne  
Nancy Hayes  
Nicole Hayter  
Laurie Hazelwood  
Maria and Kenneth D Hazen

John Heitkamp  
Charlene Helfrick  
John A. Helfrick  
Breanna Helfrick  
Alice Helle  
Paul and Lynne Hempe  
Debra and Francis Henderson  
Patricia and James Henkel  
Nathan Henn  
Stacy Henrich  
Alice Henrici  
Brenda Henston  
Lucas Herman  
Eric Hermansen  
Karen and Al Hermanson  
Patty and John Hermanson  
Valerie Hermanstorfer  
Nicholas Herrick  
Michelle Herring  
Christopher Hersha  
Elizabeth and Randy Hertz  
Liz and Randy Hertz  
Thomas Hertz  
Anne Herwig  
Holle Herzberg  
Hannah Herzog  
Andre Hessini  
Rob Hester  
Tiffany Heuton  
Rosemary Heydman  
Tom Heydman  
Jessica and Tim Hibbing  
Joleen and Dick Hibbing  
Dale Hicks  
Janet Hicks  
Judith Hieber  
Doris and Will Hildebrandt  
Rosemary and Dave Hilton  
Kent Hinders  
Laura Hirl  
Jamin Hitchcock  
Jerry Hlas  
Brenda and Keith Hobson  
Iryna Hodun  
Carole and Gary Hoffman  
Judie and David Hoffman  
William Hogg  
John Hogie  
Lisa Hokomoto  
Trevor Holbrook  
Dr Palmer Holden  
Rachel Holmes  
Rita Holter  
Owen Hope  
Hope United Methodist  
Sara Hopkins Real Estate Team  
Patricia and Charles E Hora  
Alisa and Philip Horn  
Cyndi Horn

Charles and Susan and Susan Horn  
Julee and Cy Hornberg  
Laurie Hoskins  
Timothy Franklin Hostetter  
Kim and Josh Houston  
Kimberly and Josh Houston  
Sheryl and John Hove  
Mona Huang  
Janice and Steve Hubbard  
Charlotte and Fred Hubbell  
Charlotte Hubbell  
F & C Hubbell Family Charitable Fund  
Mary Huggins  
Clifton Hughes  
SM Hughes  
Mary and Richard Hughes  
Sarah Hughes  
Ronald Huhn MD  
Riley Huhn  
Edward Human  
Amanda Hunter  
Deb and Robert Husak  
Scott Hutchens  
Albert Hutcherson  
Bev Hutney  
Tina and Paul E Huyck  
Rebecca and Walter Hyde  
Hy-Vee, Inc.

## I

ICIA INC  
Michelle Illum  
Immanuel WELCA of Ogden  
Marcia Imsande  
Jaime Ingram  
Joan and Dennis Ingwersen  
Joan and Denny Ingwersen  
Joseph Inman  
Sarah Innis  
Kristi Inskeep  
Retire Iowa  
Iowa Arboretum, Inc.  
Iowa Association for The Education of Young Children  
Iowa State Bank Trust Department  
Iowa State University  
Iowa Valley Bicycle Club  
Todd and Ann Irvine  
Andry Israel  
Stephen Iturria  
Lori and Lloyd Jackson  
Judy and Tom Jackson  
Barbara Jackson

Clarissa and Paul Jacobson  
Gloria and Ron Jacobson  
Liz Manion and David James  
Jean Jansen  
Marian and Roger Jansen  
Diane Janvrin  
Valerie Jass  
Darrell Jebson  
Clinton Jenkins  
Brian and Linda Jenkins  
Maggie and Gene Jennings  
Helen and Rudy Jensen  
Julie Jensen  
Kay Jensen  
Rochelle and Brandon Jerred  
Jayne and George Jensen  
Jewell Mayor and City Council  
Jewell United Church of Christ  
Jim Fritz Estate  
JLL  
Terri R Johanson  
Kari and Benjamin Johns  
Debra and Tom Johnson  
Ida and Alan Johnson  
Craig and Janet Johnson  
Peggy and Jeff Johnson  
Jill E Johnson  
Sheila and Doug Johnson  
Janet Johnson  
Misty Johnson  
Michelle Johnson  
Becca and Andrew Johnson  
David Johnson  
Brinn Johnson  
Kim Johnson  
Jauneta Johnson  
Kay Johnson  
Carolyn J. Johnson  
Linda Johnson-Lundquist  
Robert W. Jolly  
Laura Jolly  
Judy and Rich Jones  
Liana Jones  
Laura Jontz  
Dianna Jordan  
Shelly Jordan  
Julianne Jorstad  
Kathy and Bob Josten

## K

Deborah Kacmarynski  
Liam Kalson  
Nancy and Mike Kammerer  
Michael Kamper  
Justin Kampff  
Meaghan Kandt

Alison Kanne  
Bruce Kaplan  
Dan Kapler  
Alpha Kappa  
Judith and Douglas Karlen  
Adam Kasanof  
Cathy and Thomas Kaspar  
Jacquelyn Kaufman  
Judy and Patrick Kavanagh  
Jon and Jean Kayser  
KCRM Catholic Radio of Marshalltown  
Connie Keane  
Kevin Keating  
Theresa L Kehoe  
Keyli Keifer  
Patricia Kell  
Kathleen Kellen  
David Keller  
John Kelly  
Alicia Kempcke  
Judy Kendzora  
Shawn Kenny  
Steve Kent  
Lisa and John Kenworthy  
Joanne Kerr  
Laura Kessel  
Danille A Kesteloot  
Deb and Rich Ketcham  
Shahriyor Khojaev  
Joy Kidney  
Linda and John Kidney  
Michael Kiernan  
Dr Jennifer Killion and Eric W. Schmidt  
Karen and Charles Kilpatrick  
Courtney Kimsey  
Shannon-Marie King  
Ray King  
Chris and John Kinley  
Jessica Kinser  
Yvonne and Kevin Kinzler  
Gabriella Kish  
Tim Kissane  
Addison Kistler  
Kiwanis Club of Ames  
Kiwanis Club of Polk City - North Polk Key Club  
Kiwanis Club of Roland  
Kiwanis Club-Webster City  
Kiwanis Day Breakers  
Kiwanis of Ames Town and Country  
Dr. Erwin E. Klaas  
Bonnie and Steve Klein  
Paul Klein  
Brenda Kliethermes  
Mary Klindt  
Jill R Kloewer  
Eileen and Gerald Klonglan  
Marcus Kloos  
Cheryl Kluz



KMPG Gives c/o Bergen  
County United Way  
Mark Knam  
Deborah Knight  
Ben Knight  
Jerry and Barbara Ann Knoll  
Joanne Knoll  
Sue and Robert Knudson  
Ginny and Greg Koch  
Susan Koch Bridgford  
Ryan Koehler  
Keith Koester  
Lisa and David Koester  
Steve Kollasch  
Gregory Konrad  
Linda and Peter Korsching  
Aaron Korth  
Emily Koss  
Varvara Kossareva  
Martina Kovalcikova  
Jody Kowaleski  
Beulah and Ronald Kramer  
Beulah Kramer  
Christine Krause  
Carmen Krcil  
Kelly Krcil  
Karla Krebs  
Nancy and Patrick Kremer  
Eric Kress  
Wendy and Mark  
Kriegshauser  
Linda Kronick-Mercer  
Ardella Krull  
Krusi-Braun Giving Fund  
Debbie Kunzer  
Susan Kvach

L

La Carreta  
Ikram Labiad  
Kenneth Lacy  
Sue Lahr  
LaJames College Mason  
City  
Kim Lamb  
Kimberly Lamb  
Sherry and Leo Lambi  
Joy and Allen Lang  
Tina Lansing  
Sally and Harvey Lapan  
Paul Larsen  
Lois and Kent Larson  
Cheryl Larson  
Kris and Timothy Latham  
JoAnn Latta  
Laurel Community Chest  
Mary and Larry Laursen  
Vince LaVecchia  
Michael Law  
Margaret Law  
David Lawrence  
Ann and Tracy Laws  
Judy and Rod Leach  
David Ledvina



Anna Lee  
Amanda Lee  
Barbara and Dr. Timothy  
Leeds  
Julie Lehman  
Meredith Leigh  
Frederick Lembke  
Sergio Lence  
Nathan Lentz  
Michael Leopold  
Deb Lepper  
Don Lester  
Andrew Lester  
Judy Levorson  
Salomon Levy  
Sarah and Leslie Lewis  
Tracy Lewis  
Randy and Debbie Lewis  
Tamara Lichtenberg  
Clint Lieser  
Joyce and Terry Lillis  
Lynn Lilly  
Amelia Limyao  
Mark Linder  
Gary Lindgren  
Judith and Craig Lindholm  
Cathy Lindsey  
Jeff Linton State Farm  
Insurance  
Cherie Lisle  
Jerry Litzel  
Russ Livenspire  
Laura Lockard  
David and Julie Logemann  
Melissa Logue

Jane Lohnes  
Clifford Long  
Molly Lopez  
Mary Neubauer and Larry  
Loss  
Collette Lothe  
Louis Slaughter Agency,  
LLC.  
Jean and Benjamin  
Lounsbury  
Jerry and Joyce Lovell  
Susan Low  
David Lowman  
Ken Loynachan  
Cashae Lozano  
Mary Ann and Paul Lundy  
Donna Lutz  
Rosemary and Calvin Lyle  
Rachel and Richard Lynch  
Frank Lynn  
Patrick F Lynott Jr  
Lori and Donald Lyons  
Maura A Lyons and Mark  
Vitha

M

Shaun Mabe  
Douglas MacDonald  
Mary and Ian MacGillivray  
Patrick and Sharon Mackin  
Jere Maddux  
Madrid Community  
Chest, Inc  
Carol and Greg Madsen

Mary and Stephen Mahoney  
Peggy and Mike Mahoney  
Craig Majors  
Viktoria Makarova  
Make My Donation, Inc.  
Nuray Malik  
Martha Tanner and  
Michael P Malloy  
Margaret Maloney  
Katherine and Joshua  
Mandelbaum  
Liz Manion  
Ashley Manns  
Denis and Christine  
Marchand  
Deborah Reed-Margetan  
and Frank Margetan  
Jamison Mark  
Carrie Mark  
Alexandria Mark  
Samanthya Marlatt  
Debra Marple  
Marshall County Arts &  
Cultural Alliance  
Marshalltown Evening  
Lions Club  
Marshalltown Kiwanis PM  
Club  
Steven Godfrey and  
David M Martin  
Maribeth Martin  
Janet Martin and Robert  
Ballou  
Blanche Carey Martin  
Charitable Trust

Patricia Martinez  
Laura and Eric Marzen  
Mason City Clinic  
Charitable Giving Fund  
Cathy and Mark Mather  
Katelyn Mathews  
Heidi and Michael Mathis  
Clemett Matthews  
Mary Jo and John Mattila  
Emily and Casey  
Mattingly  
John Maves  
State Farm Insurance  
(Phyllis Mazour)  
Kim Mazur  
Deena McAndrew  
Angela McBride  
McCallsburg Lions Club  
Cynthia and Kirk  
McCollough  
Paul McConeghey  
Marilyn and Gordon  
McConnell  
Susan and Doug McCoy  
Candy Mccray  
Stacey McDonald  
McDonald's - Ames,  
Boone, Marshalltown  
McFarland Clinic  
Susan McGeeney  
Carol S McGinnis  
Michael McGlothline  
James McGlynn  
Patricia and Joseph  
McLaughlin  
Abby Mclean  
Kevin McMahon  
Bethene McMahon  
Juliann and Dick  
McWilliams  
Mechanical Air  
Mechdyne Corporation  
Mardy and John Medders  
Steven Medina  
Laura Meeker  
Linda and Michael Meetz  
Kim Meggers  
Laura and Brian Mehlhaus  
Laura and Dr Brian  
Mehlhaus  
Eric Meints  
Belinda Meis  
Amy Meis  
Ardyth Meline  
William Mengeling  
Erika Menke  
Mary Jo and Glen Mente  
Averil and Carlyle Merritt  
Emily Messmer  
Hope Metheny  
Jacob Meyer  
Kevin and Janet Meyer  
Jennifer and Michael Meyer  
Perry Meyer  
Jodi Meyer

Kay and Thomas Meyer  
Danielle Meyers  
MidAmerican Energy  
Foundation  
Kathy and Kenneth Mika  
Roberta Milinsky  
Ashley and Todd Millang  
Matthew Millard  
Jane and Leo Milleman, MD  
Kathryn Madera Miller  
and John B. Miller  
Joann and Daniel P Miller  
JoAnn Miller  
Jonathan Miller  
Scott Miller  
Marneta and Richard  
Miller  
Marty Miller  
John Miller  
Donna and Duane Miller  
Jennifer Miller  
Irmie Schewe-Miller and  
Gordon J Miller  
Maribeth Miller  
Sandra and Anthony Miller  
Robert Miller  
Laurie Miller  
Lorilee Mills  
Leo Mincks  
Susana Goggi and John  
Miranowski  
Martin Mitchell  
Marilyn & Steve  
Moehlmann  
Marilyn and Stephen  
Moehlmann  
Dianna and Ronald  
Moeller  
Rene Moen  
Janice Molinsky  
Elizabeth Mollett  
Doug Mollett  
Stacy Monroe  
Joshua Montgomery  
Rebecca Moomey  
Peter Moore  
Polly Moore  
Mary Ann Moore  
Margaret and William  
Moore  
Sharon and William  
Morain  
Stephanie Morel  
Joseph Moreno  
Carol Ann and Dave Morris  
Paul Morrison  
Jill Mortensen  
Scott Mortimer  
Kevin Morton  
Robert Mosher  
Sydney Mousel  
Emily and Robert Mueller  
Kathleen Muff  
Jeanne and Darrell  
Mullenbach

Maribeth Mulready  
David Munn  
Jon Murphy  
Daniel Mutasem  
Mary and Allen Myklestad  
Martha James and  
Michael E Myszewski  
  
N  
Garry Naberhaus  
Dilnaz Nabiolda  
Joyce and Vern Naffier  
Barnabas Nagy  
Gyorgy Nagy  
Marjorie Nass  
National Financial  
Services, LLC  
Patrick Nehls  
Victor Neilsen  
Michael Neilson  
Nasiba Nekqadamova  
Amie Rockow-Nelson and  
Jeff Nelson  
Drew Nelson  
Ann and John Nesbit  
Michael and Mary  
Nettleton  
Network for Good  
Mary Lou and Gerry  
Neugent  
Nevada Kiwanis Club  
Janelle and LeAllen  
Nevermann  
Joy M Newcom  
NextEra Energy  
Joyce Nichols  
Toni Nicol  
Judy Nielsen  
Ruth and Lyle Niemeyer  
Lisa Niess  
Jill Niswander  
Kim Nizzi  
Colette D Noble  
Paige and Steven  
Nordmeyer  
Daniel Norte  
Beth Northway  
Norwalk Ready-Mixed  
Concrete, Inc.  
NSB Bank  
Evelyn and Don Nystrom  
  
O  
Kelly and Toby O'Berry  
John Ochnich  
Shara OConnell  
Kim Oddy  
Jacqueline O'Donnell  
William O'Donnell  
Andrew O'Donnell  
Barbara and Dennis  
O'Donnell  
Jeanne and James

O'Halloran  
Kay O'Halloran  
O'Halloran Family  
Foundation  
Patricia and Ozzie Ohl  
Keeley Okeefe  
Rae Wiemers Okiishi and  
Ted Okiishi  
Margaret Okland  
Diane and Keith Oleson  
Mary and Arvid Oliver  
Mary Oliver  
Joseph Oliver  
Susan Oliver  
David O'Loughlin  
Abbey Olsen  
Janet and Steve Olson  
Gayle and Dale Olson  
Brad Olson  
Omaha Community  
Foundation  
Dan and Denise O'Mara  
Nadiia Omelchuk  
Airin Onayeva  
Irene Onayeva  
William Onderlinde  
Optimist Club of  
Marshalltown  
Mary Origer  
Patty Origer  
Kanykei Ormushova  
Bonnie Beer Orth and  
David Orth  
Mary Rose Ortmann  
Margaret Osborne  
Allison Ostendorf  
Stacey and James Ott  
Our Lady's Immaculate  
Heart Youth Ministry  
Our Savior's Lutheran  
Church  
Overflow Thrift Store  
Andrew Owens  
  
P  
Packaging Corporation of  
America  
Greg Paine  
Daniela Paladii  
Christi and Howard Palmer  
Carole Palmer  
Paige Panek  
Marion and Steve Panyan  
Maria Patriots  
Nancy and Larry Park  
Paul's Land & Livestock  
John Peak Jr  
Stephanie Pearl  
Jerika Pellington  
Jerome Peltier  
Pemm, Inc.  
Valerie and Daniel  
Pennington  
PEO Chapter DZ

Julie and Greg Perkins  
Jeffrey L. Perreira  
Matthew Perry  
Pershing LLC  
Tyler Peschong  
State Farm Insurance  
(Mike Peschong)  
Rebecca Pester  
Danika Pester  
Ana Petci  
Randi and Steve Peters  
Shellie Peters  
Samuel Peters  
Emily Peterson  
Brenda Peterson  
Joyce and Gerald Peterson  
Joan Peterson  
David and Mary Peterson  
Barbara Peterson  
Vera and Stanley M  
Peterson  
Nancy and Robert  
Peterson  
Samuel Petras  
Ann and Larry Pfantz  
Gary and Karen Pfirman  
Stephanie and Matt  
Phillips  
John Phoenix  
Madison Pickett  
Brian Pieninck  
Marlou Pieper  
Cynthia Pike  
Mary Pille  
Vicci Pinkerton  
Mary Sheka and Don  
Piper  
Linda and Mike Pixley  
Plainview Community  
Club  
Tyler Poehling  
David Polich  
Jodi Polich  
Joseph Polin  
Susan and Joe Pollpeter  
Elisabeth Poock  
Jo Popp  
Sheila and Roger Port  
Sheila Port  
Monica and Max Porter  
Patricia Post  
Quince Poston  
Terry Potter  
Susan and Craig Pottratz  
Dot and Steve Prater  
Pratt-Fenton Charitable  
Trust  
Judith Price and Bradley  
Price  
Wallis Kaye and Dennis  
Price  
Samuel Primmer  
Jacob Pschirrer  
Amy Puck  
Allison Pugh

Jane Punke  
Jill Purcell  
  
Q  
Charles and Barbara Quall  
Laura Quam  
James Quinn  
Leigh Tesfatsion and  
Senator Herman C  
Quirmbach  
  
R  
Yvonne Raes  
Esha Rahman  
Jill and Dr. Kevin Rahner,  
MD  
Mary and Raj Raman  
Jared and Jessica Rance  
Barb Ranck  
Kelly and Jason Rand  
Larae and Christopher  
Randall  
Roxanne and Marty  
Rathje  
Priscilla and Norman Ray  
Patricia Ray  
Joynell and Larry Raymon  
Victor Ronald Raymond  
Raymond James Global,  
Mason City  
Ian Reader  
Melissa Reams  
Maxine and Stan Redeker  
Redeker's Furniture  
Company  
Redemption Tattoo  
Studio  
Vicki Refshaw  
Diane M Reid  
Abi Reiland  
Rae Reilly  
Allison and Thomas  
Reinsel  
David Repp  
Resurrection Lutheran  
Church  
Leah Kristine Reu  
Sheri Reutter  
Kyle Revesz  
Chrissy Reynolds  
Lori Rezek  
Kathy Rhode  
Jill and Matt Rhodes  
Christine Rice  
Patricia Richard  
Dave Richard  
Mary Richards  
Kathleen Richie  
Cynthia and Russell  
Riessen  
Lane Riggle  
John Riley



Traci Rimbey  
Harriet and Bob  
Ringgenberg  
Harriet Ringgenberg  
Cindy and Charles  
Riordan  
Sarah and Ryan Ritchie  
Ella Rivas  
Rebecca Roarick  
Stephen Roarick  
Jean Robb  
Samuel Roberts  
Jeffrey Roberts  
Debra and Douglas  
Roberts  
Elizabeth Roberts  
Christopher Robertson  
Kathryn Robinson  
Ann Robinson  
Geoffrey Robles  
Rock Creek Lutheran  
Church Women  
Jeff Nelson and Amie  
Rockow-Nelson  
Bobbie Roe  
Drew Roen  
Carmen and Brad  
Roetman  
Rosann Rogers  
Sue Rolfson  
Maksym Rooney-Kozak  
Carol Rork  
Nadine Rosene  
Lisbeth Rosenstein  
Gordon and Carol  
Rosenthal  
Roseville St Marys  
Church  
Nancy Ross  
Karen and Dick Ross  
Karen and Richard Ross  
Nanci Ross  
Annette and Randy Roth  
Denise and Max  
Rothschild  
Ashley Rottinghaus  
Marita and Gene Rouse  
Lara Roy  
Julie Roy  
Antonio Rrapi  
Klaus Ruedenberg  
Rhonda Ruppert  
Cindy and John Russell  
Judy and Joseph Russell  
Shari Rutledge  
Rose Mary Ryan

**S**  
Sacred Heart Church  
Ladies Guild  
Jack Safar  
Brenda Safranski  
Mary and Michael Said  
Rembo Saiganov  
Ralph Salvant

Janis Sanchez  
Ezequiel Sanchez Jr.  
Christine Lauridsen and  
Rob Sand  
Deborah D Sandquist  
Kevin and Michelle  
Sandquist  
Kathy and Harry  
Sandstrom  
James Santiago  
Jackie and Bob Sarasio  
Janelle Sargent  
Jeffrey Satre  
Alisha Sauer  
Randy Macho Man Savage  
Karrie Schachtner  
Todd Schaefer  
Ryan Schaffbuch-Yeager  
Judith and Darrell  
Schaper  
Lindsey Schilling  
Carol Schlotfeldt  
Amy and Corey Schmidt  
John D Schmidt  
Jane Schmidt  
Gary L Schmidt  
William M Schmitt  
Vicki and Tom Schmitz  
Mark Schneider  
Corey Schneider  
Maggie G. Schnepf  
Jo and Alan Schoening  
Michael Scholten  
Steven Schott  
Nancy and Rick Schreier  
La Cinda Schubert  
Robert Schulte  
Rhonda and Bob Schulz  
Debbie and Randy Schulze  
Carla and Jeffrey  
Schumacher  
MaryAnn Schwering  
Cathy and Ray  
Schwichtenberg  
Quin Scott  
Susan and Norman Scott  
Janet and Harry Scurr  
Pat Seamer  
Sue Seaton  
Suzanne and Donald  
Seaton  
Jack Segal  
Marlys and Garland  
Seibert  
Mary Sells  
Rajasundar  
Senthilnayagam  
Becky and Sam Senti  
Samuel Senti  
Beth and Samil Sermet  
Joy Serovy  
Janice Serovy  
Jill Shadwick  
Gregory Shane  
Laura I Shanks

Tamara Shannon  
Bridget Shapansky  
Susan and Dennis Shaw  
Carolyn Shaw  
Jean and Elton Sheets  
Jarrod Sheets  
Mack Shelley  
Christina and Dane Shelton  
Daniel Sheppard  
luedtke Sherry  
Suzan and John Shierholz  
Erik Shoden  
Con and Sandra Short  
Kenda Shqair  
Pam and Glenn Sibbel  
Susan Sieh  
Eldon and Betty Siemers  
Gloria Sietmann  
Doug Sievers  
John Silva  
Cherri and Steve  
Simmons  
Paul Simmons  
Doris Simmons  
Kelly Simmons  
Michael Simonson  
Cathy and William Simpkins  
Simple Generosity  
Leigh Sinclair  
Jamie Sinclair  
Linda and Noel Singer  
Linda Singer  
Kara Sinnard  
Halee Sinner  
Travis Sisson  
Amy and Mark Slagell  
Michele Slawson  
SLOMO Health LLC  
Alaina Small  
Linda Small  
Corrin Smith  
Amy Smith  
Karen and Thomas Smith  
Cheryl Smith  
Jacquie and Darrell Smith  
Kerri Smith  
Patricia Smith  
Dawn Smith  
Sandra K Smith  
Snell Family Trust  
Linda and Curtis Snook  
Louise and Steven Snyder  
Shannon Sobek  
Barbara and Larry Soland  
Jacqueline Soloman  
Gabrielle Charlotte  
Solomon  
Tyler Sontag  
Kent Sovern  
Patricia and Kim Spangler  
Tawnua Speakar  
Cari and Barry Spear  
Vaughn Speer  
Jean and Selden Spencer  
Mary Spitz

St Mary's Catholic Church  
St Olaf Welca  
Ron Staab  
Jeffrey and Lori Stadheim  
Susie and Paul Stageberg  
Robert Stalker  
Valerie Stallbaumer  
Joe Stalzer  
Judy Stammeyer  
Winifred and Ellis  
Standing  
Lisa and Whitey Stange  
Joan and Robert Stanley  
Rico Starling  
State Farm Insurance  
Kari Stecher  
Lois Lundgren and Alvin  
Stecker  
Sharon and Alan Steckman  
Lisa Steel  
Kelly Steer  
Maria Stefanidou  
Stellar Industries  
Melinda L Stelling  
Rosemary and Linda  
Stemler  
Janet and Mark Stenson  
Janet and David  
Stephenson  
Stephen Sterling  
Jeanette Sterner  
Mary and Emmett  
Stevermer  
Karen and James Stewart  
Veronica Stice  
Arliss Stockdale  
Theresa Stoltenberg  
Larry Stoltenberg  
Stoneex Financial  
Susan and Frank Stork  
Story County Community  
Foundation  
Linda and Bill Stotts  
Janeann and Michael  
Stout  
Susan Straka  
Herbert and Joan Strentz  
Shirley and Marvin Stromer  
Carol and Claude Stuart  
Mildred Stubbs  
Floyd E. Sturgeon  
Jane and Robert Sturges  
Leon J Stutzman  
Shankar Subramaniam  
Melanie Suljic  
Nicole Sullivan  
Deanne and Robert  
Summerfelt  
Anna Sunstrom  
Sure Service  
Nisha Suresh  
Valerie Sutton  
Sherlyn Sutton  
Patricia and Robert  
Swanson

Patricia Swanson  
Mary Jo and Jack  
Swanson  
Linda and Steven R  
Swartz  
Kate Swegle  
**T**  
Del Tacore  
Kristin and Dan Tague  
Wood Tammy  
Marco Tapia  
Janet Tapscott-Hopper  
Target Corporation  
Colleen and Dennis Tasler  
Jacqueline and Todd Tatum  
Jean and Thomas Tauber  
Nancy and Donald Taylor  
Brad and Kristin Taylor  
Joan TaylorSparland  
Austen Tebockhorst  
Patricia Teclaw  
Elizabeth and Vladimir  
Tereshchak  
Harrison Allen Terrill  
Andrew Terry  
Deb Tesar  
Leigh Tesfatsion and  
Senator Herman  
Quirmbach  
Michael Teske  
Mathew Tessau  
Linda Holvik and Phil  
Tetzloff  
The Dance Konnection  
The Minnesota Vikings  
The Signatry  
The Supply Hive  
Theisen's Home Farm &  
Auto  
Johann Thiel  
LeRoy Thielmann  
Sheryl and David Thomas  
Catherine Thomas  
Heidi Thompson  
Janet and Gary Thompson  
Janet Thompson  
Stacey Thompson  
Sandra Thompson  
Roxanne and Dale  
Thompson  
Lisa Thoms  
Deborah and Chris Thorn  
Geraldine Thornsberrry  
Thrivent Financial  
Kimberly Thuente  
Carla Tibboel  
Cheryl and Roger Tietjens  
Melissa Timmer  
Tatiana and Carl Tipton  
Linda and James Tjaden  
Jeffrey Tjaden  
Terrence Tobin  
Deb and Jim Todd  
Pat and O Jay Tomson

Thomas Tonelli  
Joe Toot  
Ann and Daniel Topf  
Angela and Erik Torgerson  
Betty and Jon Torgerson  
Gabriel Torres  
Tamela Toth  
Kathy and Walt Trahanovsky  
Andy-Hung Tran  
Samara and Patrick Trenary  
Trinity Lutheran Church  
Trinity Lutheran Church  
Women  
Trinity United Methodist  
Church-Women  
Melissa Tritten  
Shayla Troendle  
Marta Trueblood  
TrueNorth Companies  
Jana Tschopp  
Antonio Tuazon  
Susan and David Tucker  
Janice and Steven Tuil  
Judy and Carroll Tunesvik  
Natali Tunishvili  
Sarah and Mike Tupper  
Matt Tupy  
Andrew Turner  
Sharon and Kurt Turner  
Sandra and John Turner  
Sandra Turner  
Turner Construction  
Company

**U**  
Jason Uehling  
Chris Uglum (Pivot  
Wealth Strategies)  
Ardy Ulrichson  
Union Park Presbyterian  
Church  
Unitarian Fellowship of  
Marshalltown  
United Bank of Iowa  
United Fund of Eldora  
United Methodist Women  
Ames  
United Methodist Women  
Boone  
United Way of Central  
Indiana  
United Way of East  
Central Iowa  
Jacob Unruh  
Susan and Steven  
Urbatsch  
Jenny Utterback

**V**  
Nan and Dan Valentine  
Rita and Larry Vallery  
Kathryn van der Gugten



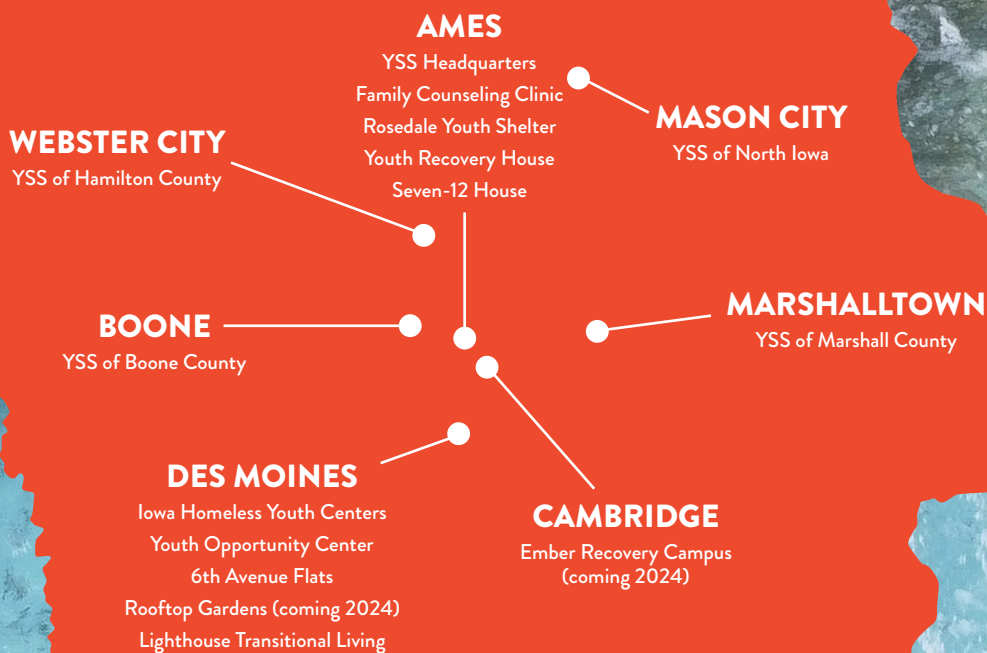
Jeri Van Elsen  
Linda and Gary Van Pelt  
Lynne Van Valin  
Angie Van Winkle  
Catherine Vance  
Susan Vande Kamp  
Alan and Donna  
Vandehaar  
Brenda and Mark A  
Vandenberg  
Tami and Scott Vander  
Hart  
Arthur Vanderlick  
Megan Vandeventer  
Stephen VanHouten  
Chris and Dean Vaughn  
Christine and Dean  
Vaughn  
Jean Vaux  
Andrew Velasquez  
Edward and Janet Velie  
Teresa Velin  
Chris and Heidi Venem  
Katelyn Mckenzie Venson  
Daniel Venter  
Kleja Verbylaite  
Veridian Credit Union  
Dan Vessely  
Donald Vick  
Village Cooperative  
Activity Fund  
Melissa Vine  
Carolyn Vipond  
Alberta and Phil Voge  
Mavis and Stuart  
Vogelbacher  
Linda and Fred Vogtlin  
Todd Vorpahl  
Barbara Vovos  
Henry Vu  
Brandi Nhi Vu

**W**  
Barbara Wadler  
Michael Wagner-Diggs  
Ann and Jack Wahlig  
Wakonda Christian  
Church  
T E Waldmann-Williams  
Naomi and Phil Waldo  
Barbara and Ernie  
Waldron  
Barbara Waldron  
Katherine Walker  
Patty and Jim Walker  
Christian Walker  
Mary Walker  
Kasey Walker  
Nicole Wallace  
Tracey Walter  
Carol Walters  
Mary and George  
Wandling  
Sandi and Stephen Ward  
Sandi and Steve Ward  
TJ Ward  
Amy Ward  
Kara and Bryan Warne  
Susan Warner  
Scott Warner  
Jeanne and Gary Warning  
Jeanne Warning  
Joan and Kim Wass  
Nancy and Joseph  
Wauters  
Wax Xtatic Record Audio  
Stereo LLC  
Laura Wayne  
Susan and Joe Weaver  
Reindl Weaver  
Justice Weaver  
Donald Weber

Danelle and Corey  
Weddle  
Madeleine and Joel  
Weeks  
Troy Weiland  
Leah Weinstein  
Jana and Matt Weiss  
Jana Renae Weiss  
Jeremy Weiss  
Rhonda and Richard  
Weiss  
Elizabeth and Raymond  
Weitzel  
LaVonne and John Welch  
Angela Weller  
Wellmark Foundation  
Mary Wells  
Wells Fargo  
Kristin Welter  
Jody Werth  
Wesley United Methodist  
Women  
Audrey West  
West Fork United  
Methodist Church  
Judine V and George  
Westendorf  
Linda and Westergaard  
Fonda and James  
Wettstad  
Harold E and Barbara A  
Wheaton Trust  
Mary and Walter Wheeler  
Joyce Wheeler  
Kathleen Wheelock  
Eric White  
Christianna White  
James White  
Carolyn Whitlatch  
Toni and William Whitman  
Marcia and Jack Whitmer  
Cinda Whitten  
Heather Whitten  
Karen and Jonathan  
Wickert  
Robyn and Gary Wilcox  
Charles W Wilcox  
Tanya Wilhite  
Imogene Wilkinson  
Shannon Willadsen  
Yvonne Willadsen  
Todd Willemsen  
Ann and James Willer  
Darla Willett  
Jeri Williams  
Linda Williams  
Anna Williams  
Dylan and Taylor Williams  
Teri Williamson  
Rich Willis  
Brian T Wilson  
Bronson Wilson  
Debra and Steven Wilson  
Winnebago County  
Community  
Foundation

Gladys and David Winter  
Bethany and Bruce Wirin  
Kristin Wise  
Ronda and Bob Wissink  
Teresa Wichtendahl  
Elizabeth Wold  
Jim Wolfe and Janis  
Rockabrand  
Pat and Thomas Wollan  
Michael Wolnerman  
Margy Wood  
Melissa and Austin  
Woodin  
Woodman Controls  
Dennis Woods  
Anna Woods  
Denise Woods  
Dianne R. Woods  
Reed Woods  
Dianne Woods-Fowler  
Kaden Woody  
Dale Woolery  
Jonathan Wright  
Susan Wright  
Anne Wright  
Diana Wright  
Dustin Wright  
Justin Wright  
Katherine Wulko  
Wade Wych w  
**Y**  
Cindy Yakel  
Yelyzaveta Yaryshkna  
Altynay Yeraly  
Iliyas Yessenaly  
Carolyn Yorgensen  
Kendra and Rich Youds  
Pierre Youhanna  
Katherine Young  
Scott Young  
Lori and Kirk Youngberg  
Shirley Yungclas  
**Z**  
Elizabeth Zaletel  
Linda and Hank Zaletel  
Nancy and Ted Zaletel  
Fahimuz Zaman  
Agnes and Jerald Zeihan  
Bael Zhenishev  
Sherrie and Dan  
Zimmerman  
Kari Zimmerman  
Norm Zimmerman  
Zion Lutheran Church  
Women Clear Lake  
Zion St John Lutheran  
Church Sheffield  
Joan and David Zrostlik  
Barbara Zrostlik-Beyer  
Glenda Zuzinec  
Lynn and Larry Zwagerman





## WHERE WE ARE

YSS is headquartered in Ames and located across Iowa, so we can offer local as well as statewide services for thousands of families.

Our sites are not cookie-cutter models—instead, we tailor our services to fit the highest needs of each community.



@WeAreYSS



515-233-3141 (Business Office)  
515-232-4YSS (Behavioral Health)



www.YSS.org